

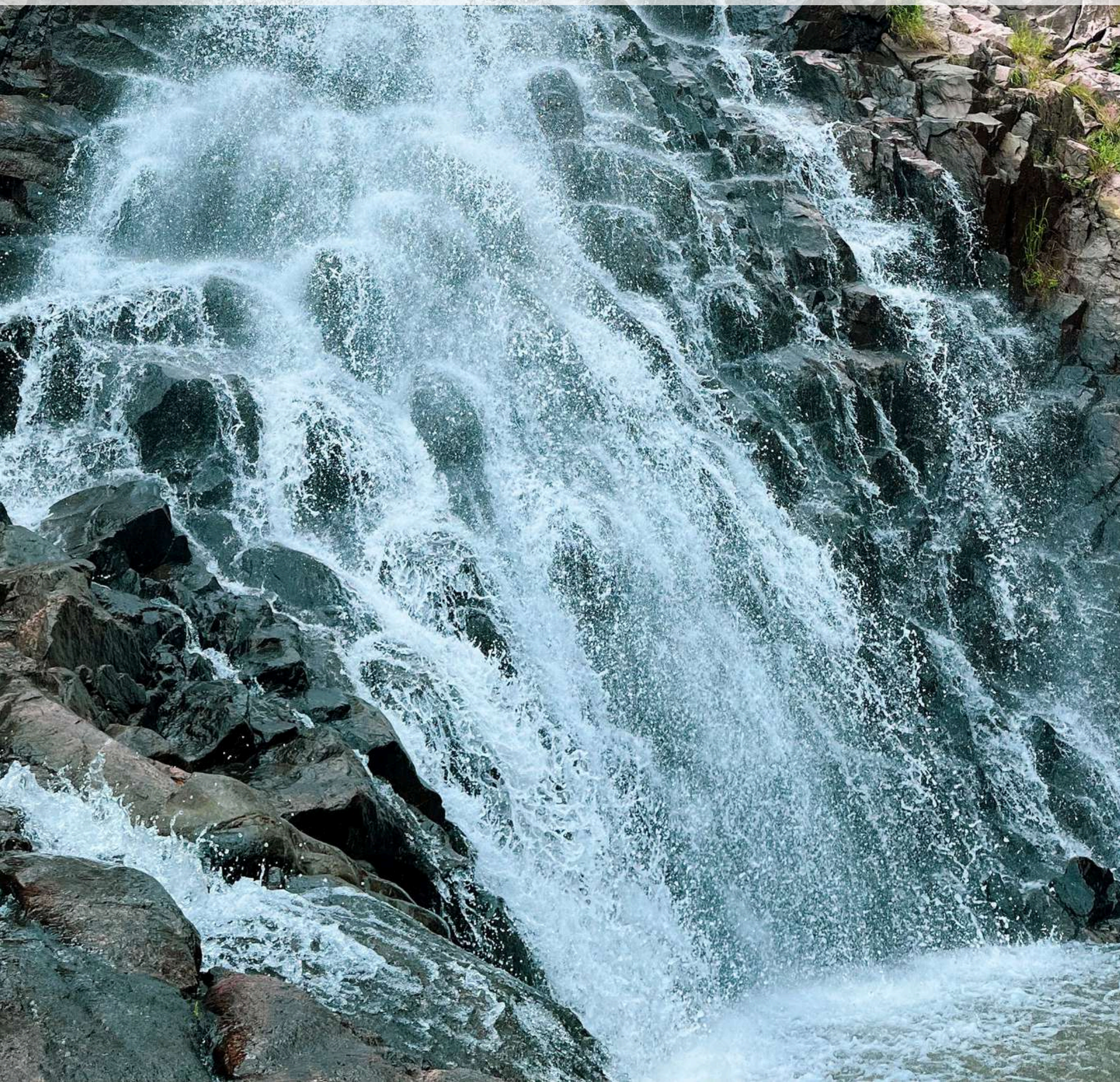
MOUNTAINSOULS

RATANMAHAL

PERADISE OF PANCHMAHAL

2 DAYS & 1 NIGHT

www.mountainouls.in





ABOUT RATANMAHAL

Ratanmahal Sloth Bear sanctuary which is perched on the Ratanmahal hills is located in the district of Panchmahals. This sanctuary is inhabited by the sloth bears which belong to the insectivorous bear species and a native to the Indian sub-continent. It is one of the top tourist attractions in Gujarat where the tourists can get acquainted with the habits and behaviors of the sloth bear. A recent study revealed that there were about 166 sloth bears in the sanctuary back in the year 2021. This sanctuary is also home to some of the elusive species like leopards.



[TAP TO VIEW BEAUTY OF RATANMAHAL](#)

ITINERARY



DAY - 1

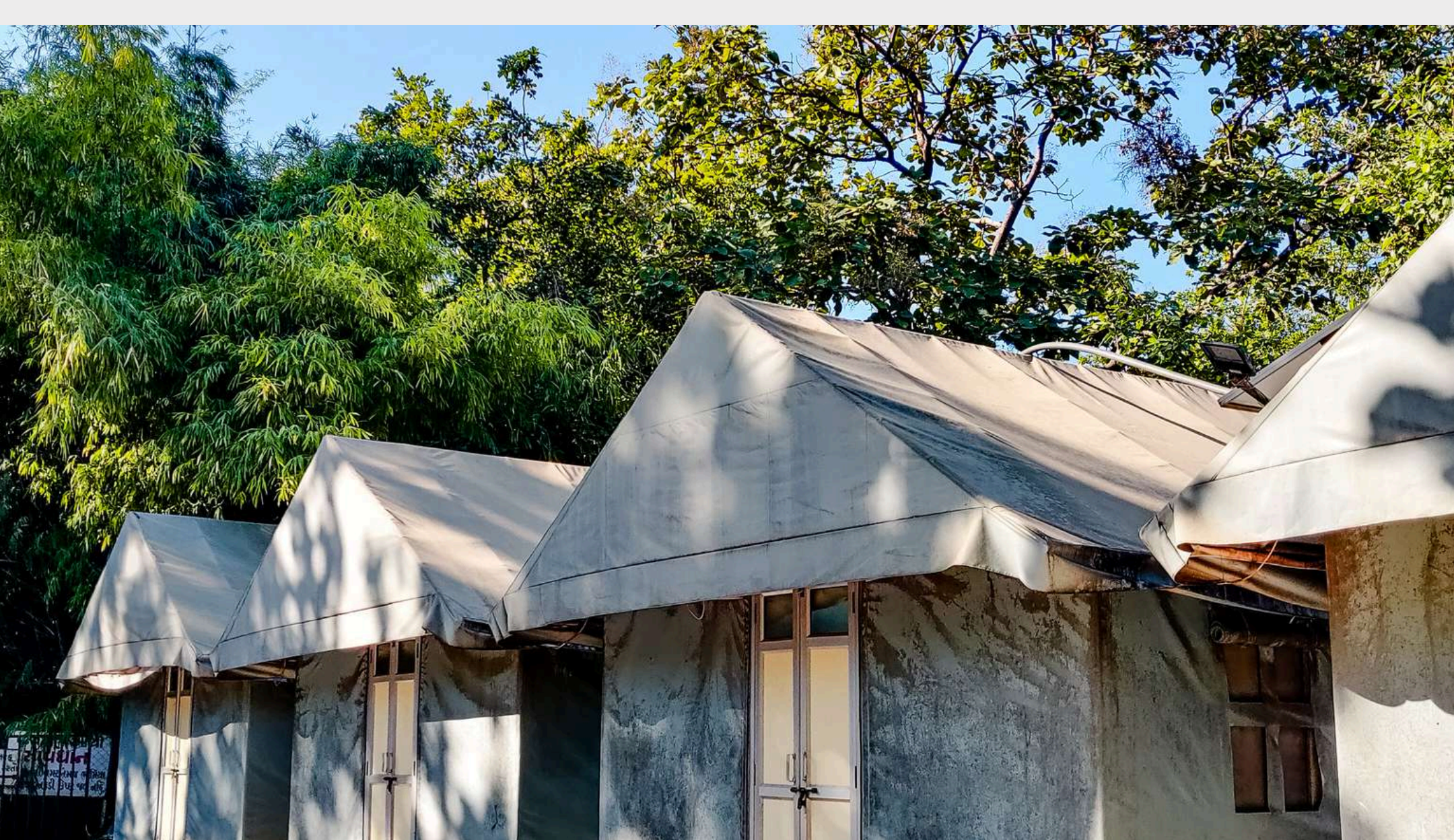
Early Morning departure from Ahmedabad & Late Night Departure from Surat.

- Brekfast and Tent Allotment**
- Jungle walk at Udal Mahuda lake**
- Lunch & Rest time**
- Special Jeep Ride to Table Top of Mountain.**
- Dinner & Talent Evening**
- Night trek if weather permits.**



DAY - 2

- Early morning Wakeup & Breakfast**
- Trek to Naldha Waterfall - trail go throw dense forest Along with water streams & time for nature bath at Waterfall**
- Lunch which include local Food called Dal Paniya; & Rest time With Feedback Session**
- Departure for Home with Sweet Memories**

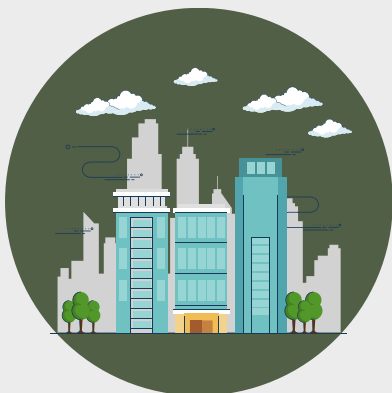


COSTING



EX. AHMEDABAD
3850/- Per Person

***For Registration participants have to full amount**



EX. SURAT
4050/- Per Person

***For Registration participants have to full amount**



EX. RATANMAHAL
2550/- Per Person

***For Registration participants have to full amount**

**ALL PAYMENTS NEED TO BE MADE BY A WEEK BEFORE THE TREK.
ANY CANCELLATIONS MADE IN THE 7 DAYS LEADING UPTO THE TREK
WILL NOT BE REFUNDED.**



INCLUSIONS

- **Traveling in AC Rental vehicle**
- **Accommodation in tent (on sharing basis)**
- **All meals (Breakfast, Lunch, Dinner)**
- **Trekking and Camping Games**
- **Guide fees & Forest permit**
- **Medical kit .**



EXCLUSIONS

- **Personal expenses**
- **Cost occurred due to change in program due to unforeseen circumstance like.**
- **Tip To Staff**



TERMS AND CONDITIONS

- This is an Adventure Camp and not a tour, so we expect a high level of discipline
- Participants will have to follow the instructions clearly given by the volunteer/guide, Misbehave/Arguing with the volunteers/guide/instructors will be considered as disciplinary issues
- Smoking, alcohol, tobacco & abusive language are strictly prohibited & if anyone found a suspect in such cases, the participation will be terminated and no further service/return traveling/refund will be offered then after
- Accommodation & Sanitary Facilities for Girls & Boys are separate
- Punctuality is taken as a serious matter



LET'S FIND SOME
BEAUTIFUL PLACES
TO GET LOST TOGETHER



www.mountain Souls.in



[mountain Souls.in](https://www.mountain Souls.in)



Raivat Ved : 83472 02711 (Ahmedabad)

Raju Bhatiya : 99983 64694 (Surat)



**311, Pehel Lakeview, Nr. Vaishnodevi
Circle, behind Shaligram Lakeview,
Ahmedabad, Gujarat 382421**

